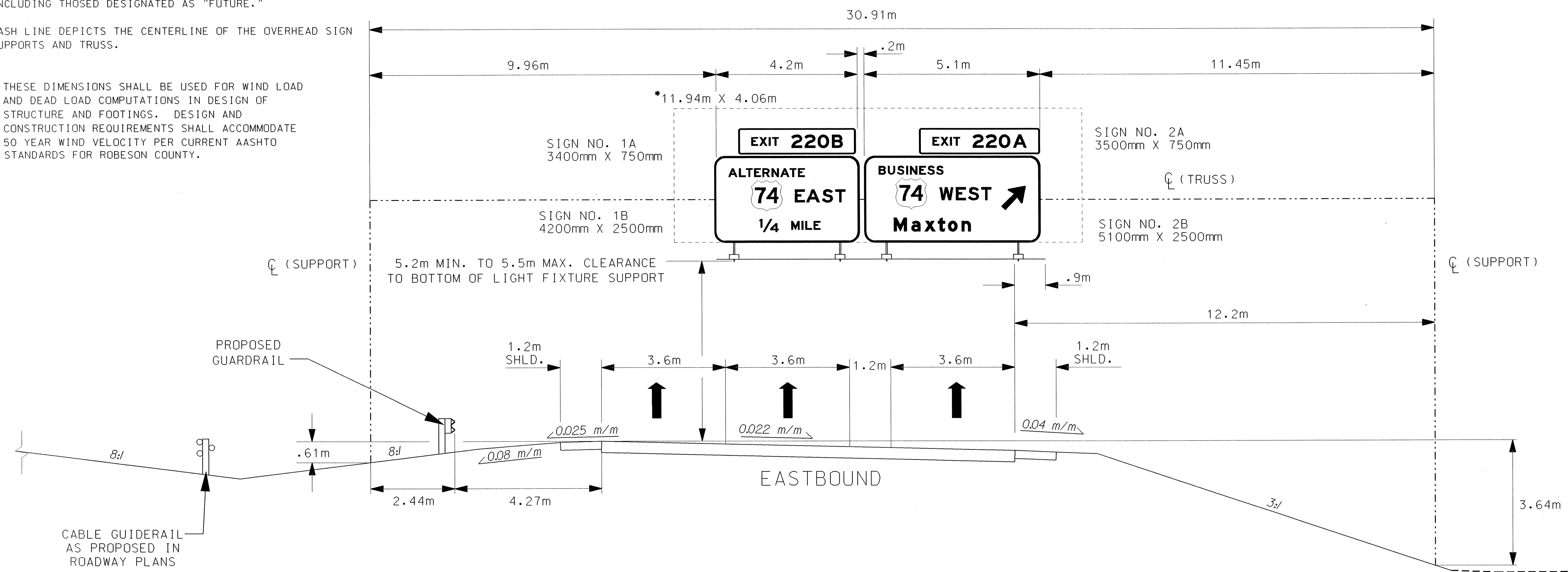


NOTES:

- IF THE CONTRACTOR BIDS ALUMINUM SIGN STRUCTURE, EACH SHALL BE PROVIDED WITH APPROVED HIGHWAY TRUSS DAMPER DEVICE IN ACCORDANCE WITH AASHTO SPECIFICATONS.
- ALL SIGNS SHALL BE VERTICALLY CENTERED ON THE HORIZONTAL TRUSS WHEN ATTACHED.
- THE BOTTOM EDGE OF ALL LUMINAIRE SUPPORTS IN EACH ASSEMBLY SHALL BE LOCATED ON A HORIZONTAL PLANE AND HAVE THE SAME OFFSETS FROM THE FACE OF THE SIGNS. REFER TO THE LIGHTING SYSTEM FOR OVERHEAD SIGN ASSEMBLIES (SHEET 2 OF 2) FOR OFFSET VALUES.
- FIELD VERIFICATION SHALL BE REQUIRED FOR ALL FOOTING ELEVATIONS PER THE LATEST N.C.D.O.T. STANDARD SPECIFICATION FOR ROADS AND STRUCTURES.
- THE TOP OF THE FOOTING SHALL EXTEND AT LEAST 152MM AND NOT MORE THAN 610MM ABOVE THE HIGHEST POINT OF THE GROUND SURFACE AT THE FOOTING.
- SIGN HANGERS, HARDWARE SHALL BE PROVIDED AND INSTALLED ON THE ASSEMBLY TO ACCOMMODATE ALL SIGNS SHOWN IN THE PLANS, INCLUDING THOSE DESIGNATED AS "FUTURE."
- DASH LINE DEPICTS THE CENTERLINE OF THE OVERHEAD SIGN SUPPORTS AND TRUSS.

* THESE DIMENSIONS SHALL BE USED FOR WIND LOAD AND DEAD LOAD COMPUTATIONS IN DESIGN OF STRUCTURE AND FOOTINGS. DESIGN AND CONSTRUCTION REQUIREMENTS SHALL ACCOMMODATE 50 YEAR WIND VELOCITY PER CURRENT AASHTO STANDARDS FOR ROBESON COUNTY.



**OVERHEAD SIGN ASSEMBLY
@ STA. 12+80 (-L-)**

**SIGNS FURNISHED BY STATE
ALL SIGNS SHALL BE FIELD LOCATED BY THE ENGINEER**

	PROPOSED OVERHEAD SIGN ASSEMBLY @ STA. 12+80 (-L-)		
	SCALE	N.T.S.	N. C. DEPARTMENT OF TRANSPORTATION
	DATE	MAY 2004	DIVISION OF HIGHWAYS
	SIGNING TECHNICIAN	JAWEMH	TRAFFIC ENGINEERING BRANCH
SIGNING DESIGN ENG	LM MOON		
SIGNING PROJECT ENG	JT BROOKS		

PBS&J 1616 EAST MILLBROOK ROAD, SUITE 310
RALEIGH, NORTH CAROLINA 27609
PHONE: (919) 876-6888

17-MAY-2004 13:42
 C:\CURR\260219_50_0513\45\igns\structural\Line Drawings\01.dgn
 911699